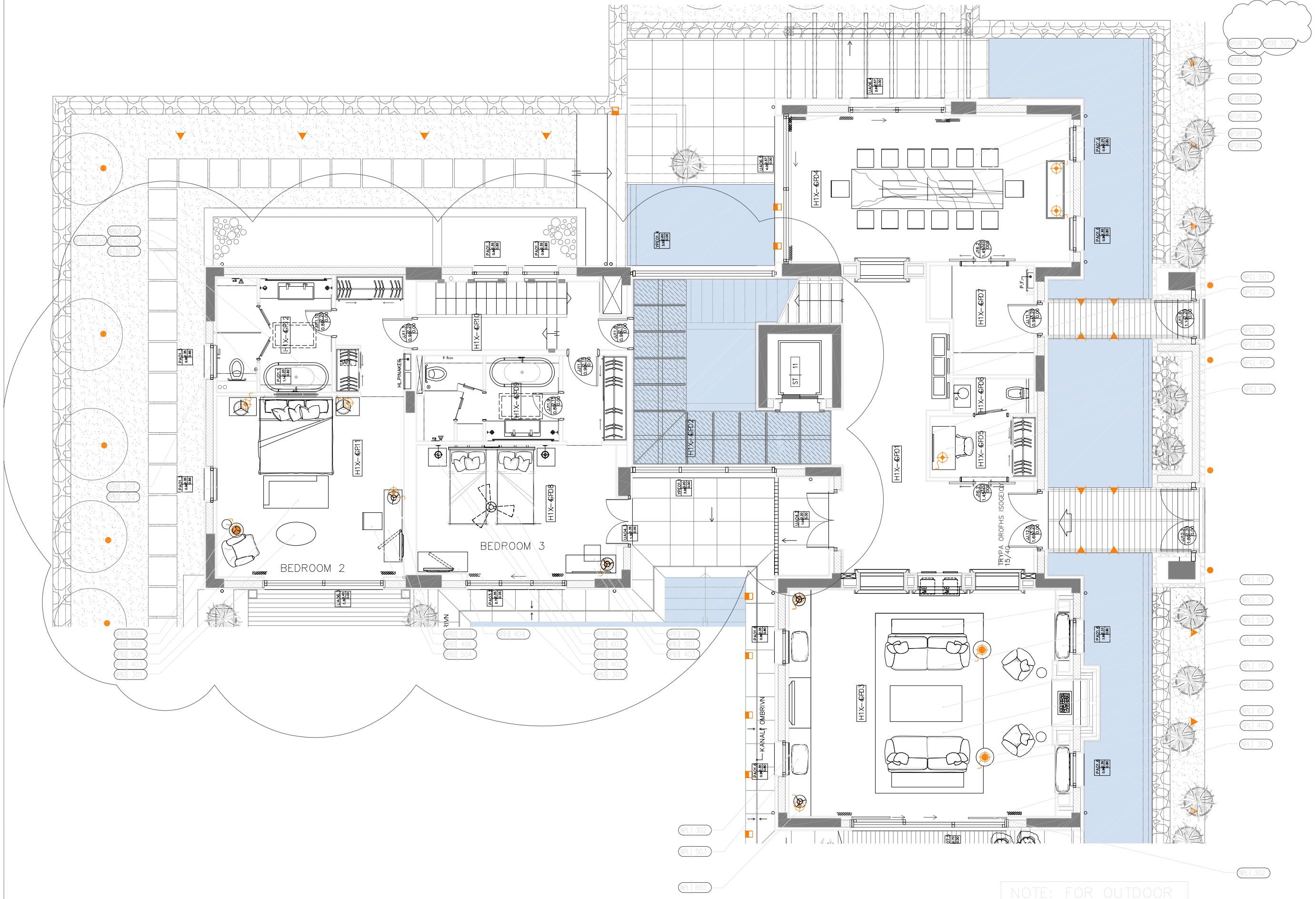


This drawing is for information only to be used by the contractors as a general arrangement of interior conditions. It has been made from available information, however measurements are to be verified on project site. This drawing must be verified and approved prior to final detailing and fabrication.
 This drawing is the property of MKV and is not to be reproduced or copied in whole or in part. It is only to be used for the project and site specifically identified herein and is not to be used on any other project. It is to be returned upon request.



1 PRESIDENTIAL SUITE - FF&E LAYOUT GROUND FLOOR AS SHOWN

NO	DATE	DESCRIPTION
3	06.02.09	UPDATED FF& E CODES
2	18.12.06	UPDATED ARCHITECTURE XREF
	08.10.06	ADDED UP DATED ARCHITECTS LAYOUT ADDED BALLUSTRADE

REVISIONS
PROJECT NAME

NAVARINO ROMANOS NORTH_HOTEL

ISSUE
 ISSUED FOR REVIEW ONLY (NOT FOR CONSTRUCTION)
 ISSUED FOR CONSTRUCTION

SHEET TITLE
 PRESIDENTIAL SUITE
 FF&E LAYOUT
 GROUND FLOOR
 LEVEL 11.70

DRAWING NO
 PSN 01-01

SCALE 1/50 DRAWN BY
 PROJECT NO 0327_SH CHECKED BY

MKV DESIGN Ltd
 INTERIOR ARCHITECTURAL DESIGN
 LONDON OFFICE
 2042L High Street, London, SE11 5TA, UK
 Tel: +44 (0)20 7342 2000 Fax: +44 (0)20 7342 1001
 Website: www.mkv-design.com
 Email: info@mkv-design.com

NOTE: FOR OUTDOOR FURNITURE PLEASE REFER TO DRAWING PSN-01-01A